

AURORA 3

SEATS 3 31 JETS
60" x 84" x 34"



The Aurora 3 was designed for small spaces while placing total comfort and hydrotherapy first. Stretch out in the luxurious lounger or ease into the most comfortable captain's chair that gives head-to-toe hydrotherapy. This hot tub delivers huge relaxation in a small package! The Aurora 3 is shown above in Silver Satin.

SPECIFICATIONS

DIMENSIONS

60" x 84" x 34"

WATER CAPACITY

210 gal | 795 ltr

WEIGHT

395 lbs | 179 kg dry
2,148 lbs | 973 kg filled

WATER FEATURE

Infinity Edge

WATER CARE/FILTRATION

50 square foot filter
Mazzei Ozone system

CONTROL SYSTEM

Balboa BP100
240v/50amp

HEATER

5.5 kW Heater

ENERGY EFFICIENCY

2.0 lb density polyurethane foam
Temp Shield & Foam Board

JET PUMPS

1 pump, 4 total horsepower

LIGHTING

20 LED points-of-light

OPTIONS

UPGRADED CONTROLS

SpaTouch touchscreen/WiFi

ADVANCED JETTING

AirX System

WARRANTY

LIMITED LIFETIME

Slip Resistant Shell

FIVE YEARS

Premium Cabinet

THREE YEARS

Electrical and Plumbing

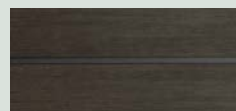
PREMIUM CABINET COLORS



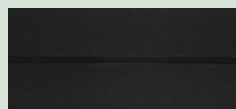
COASTAL GRAY
with BLACK CORNERS



WALNUT



BARNWOOD



BLACK SLATE

SLIP-RESISTANT SHELL COLORS



WHITE SATIN



SILVER SATIN



OPAL SATIN